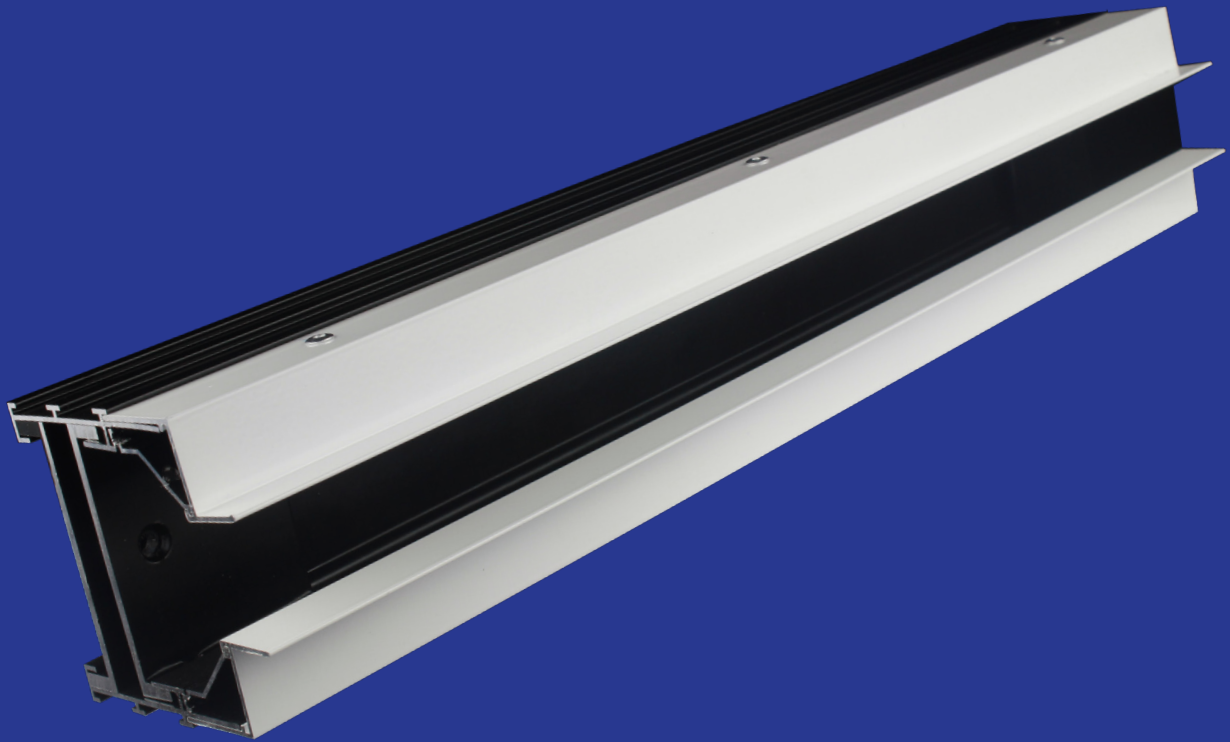




**air master**  
ISO 9001 CERTIFIED COMPANY



# FLOW BAR DIFFUSER

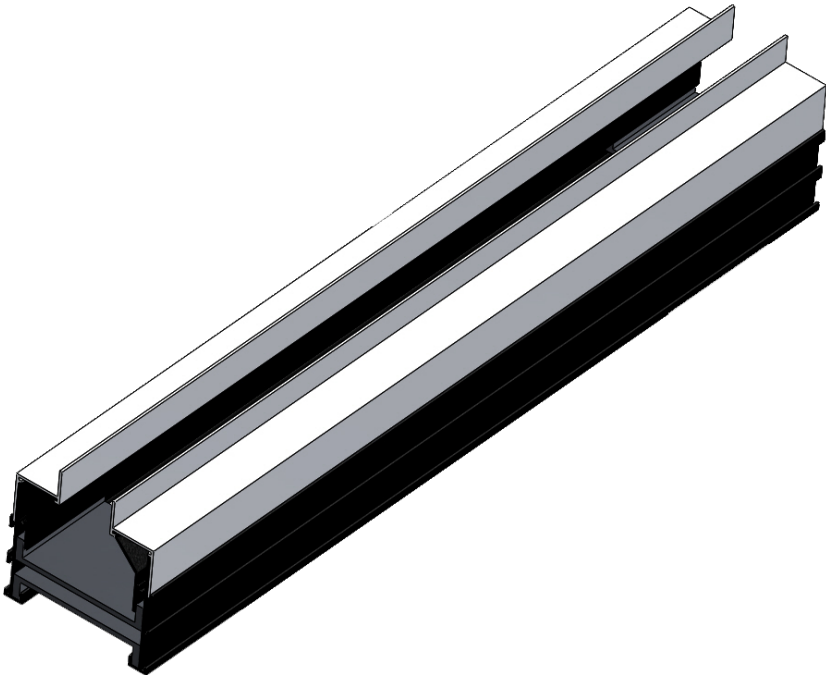


[www.airmasteremirates.com](http://www.airmasteremirates.com)

# FLOW BAR DIFFUSER

## INDEX

SECTION	TOPIC	PAGE
7A.1	FLOW BAR DIFFUSER - AFBD-3	3
7A.2	FIXING DETAILS	4
7A.3	PERFORMANCE DATA	5

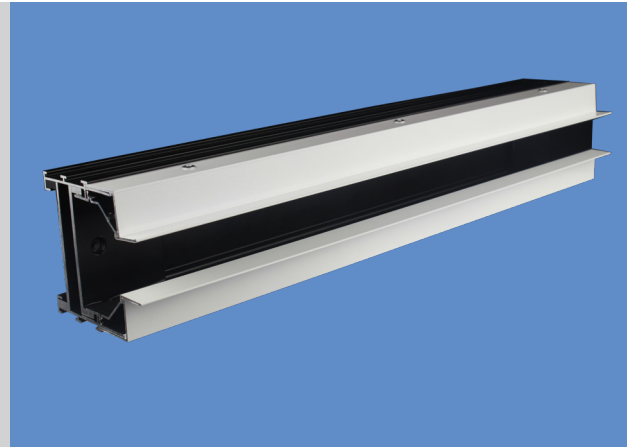


## CONSTRUCTION:

**Frame:** High quality extruded aluminium profile.

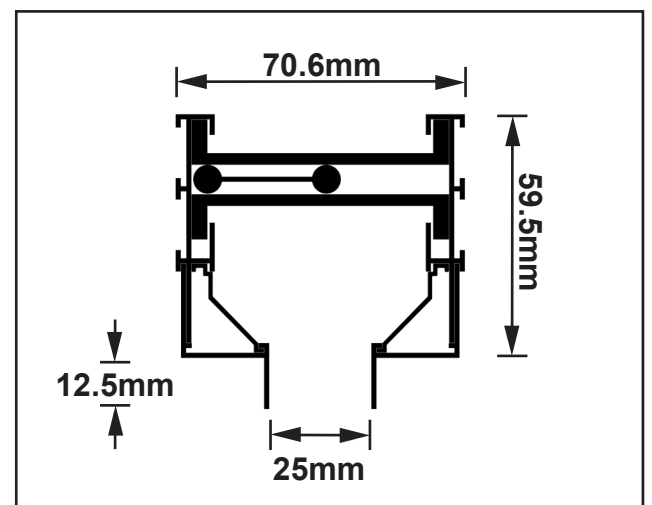
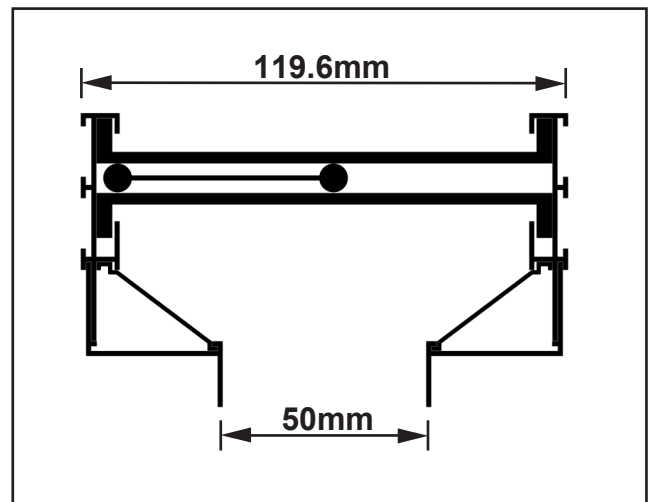
**Deflector:** Flat Aluminium profile with rounded edges.

**U-Channel:** Spring loaded Aluminium channels to hold deflector.



## DESCRIPTION:

- Air Master Flow Bar diffuser is specially designed to suit the contemporary architectural demands of modern-day interior designers. The seamless blending of slot diffusers in to the ceiling along with enhanced performance makes it a fine choice.
- AFBD-3 model flow Bar diffuser is designed to be flushed with ceiling tile and serve ceiling mounted applications. No flange is visible and the view of a black opening into the ceiling gives a high-class finish to the interior.
- Multi slot options are not available for AFBD-3 model.
- Flow Bar can handle more air volume per length for the same opening as compared to regular slot diffuser.
- The deflector is sandwiched between U-Channels to control the direction of air flow. The U channels are spring loaded for smooth operation of deflector.
- Air Master Flow Bar is equipped with special side deflector to channel the airflow smoothly towards the opening without any resistance to air flow thereby reducing the pressure drop and subsequently the noise level.
- White frame with black interior makes the finish more attractive.



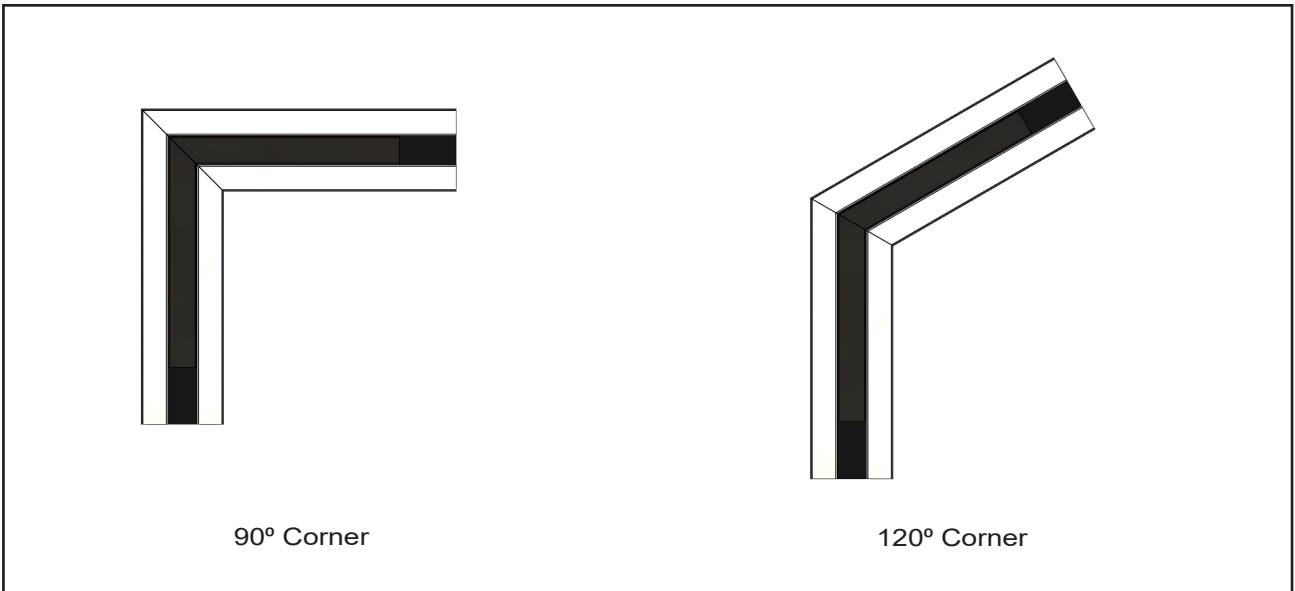
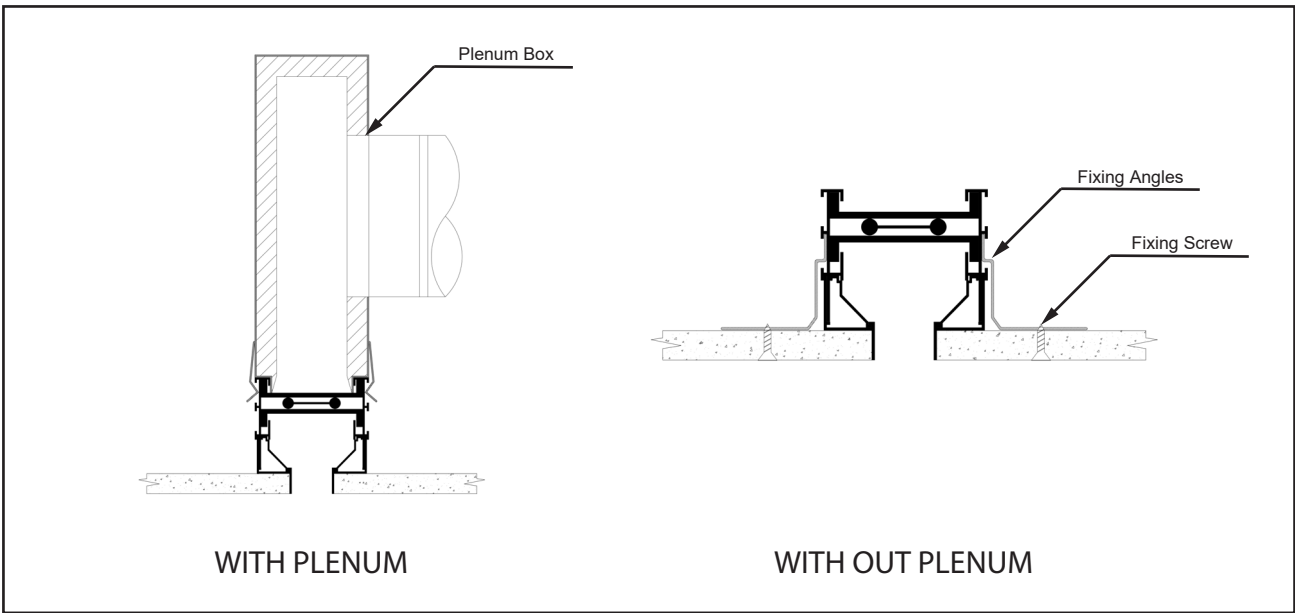
**STANDARD FINISHES:**

- Powder coated frame as per RAL colour codes with black interior.

**SLOT OPENING:**

- 25mm and 50mm

**FIXING DETAILS:**



## DATA FOR 25mm SLOT OPENING

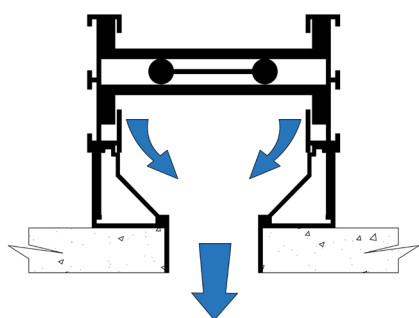
CFM/mt	75	125	175	225	275	325	375
Pressure (Pa)	7	14	30	51	78	108	145
Ps in mmH <sub>2</sub> O	0.7	1.4	3	5.1	7.8	10.8	14.5
NC (dB)	<10	15	25	33	38	44	49
Throw (mt)	1.4-2.3-4.2	2.6-4.0-5.5	3.7-4.6-6.5	4.3-5.1-7.3	4.5-5.7-8.2	5.1-6.1-8.9	5.4-6.7-9.5

## DATA FOR 50mm SLOT OPENING

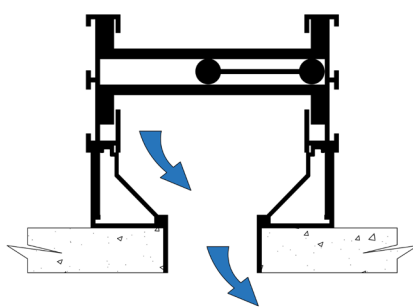
CFM/mt	90	160	230	290	350	410	470
Pressure (Pa)	5	14	27	40	54	75	95
Ps in mmH <sub>2</sub> O	0.5	1.4	2.7	4	5.4	7.5	9.5
NC (dB)	<10	10	23	29	34	39	44
Throw (mt)	1.4-2.6-4.8	2.6-4.3-6.2	4.1-5.3-7.5	4.7-5.6-8.1	4.9-6.2-9.0	5.4-6.7-9.8	5.8-7.3-10.4

- Data based on one meter length of the diffuser.
- Ps: Static pressure loss is in mm of H<sub>2</sub>O.
- Throw (meters) is measured for terminal velocities of 0.25, 0.5 & 0.75 m/sec.
- NC based on a room attenuation of 10 dB.

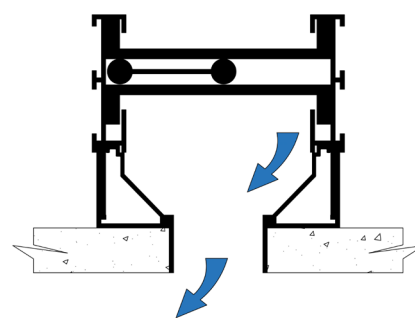
## AIR FLOW PATTERN:



VERTICAL



HORIZONTAL  
RIGHT



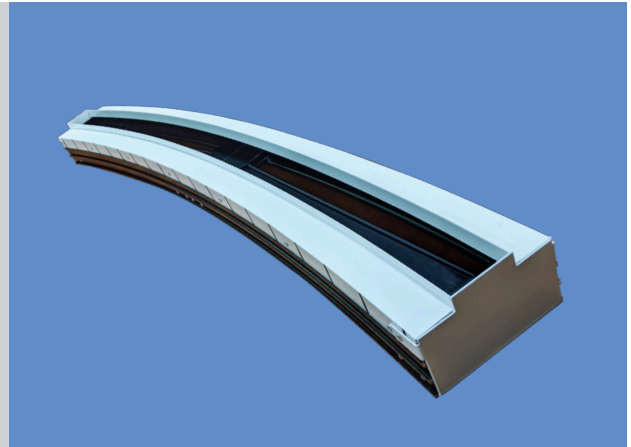
HORIZONTAL  
LEFT

## CONSTRUCTION:

**Frame:** High quality extruded aluminium profile.

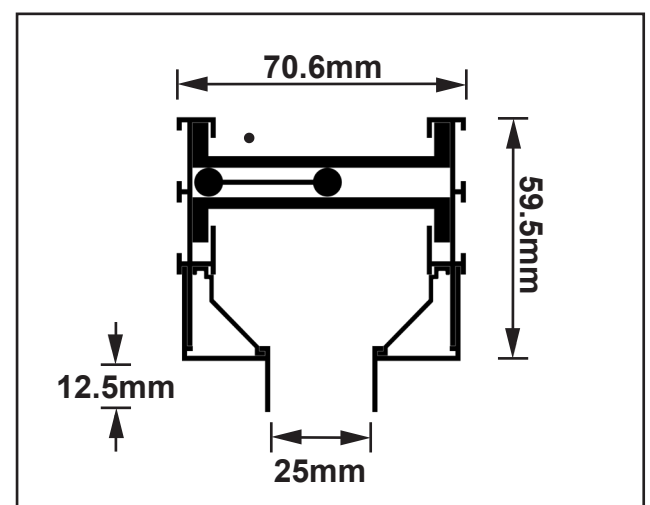
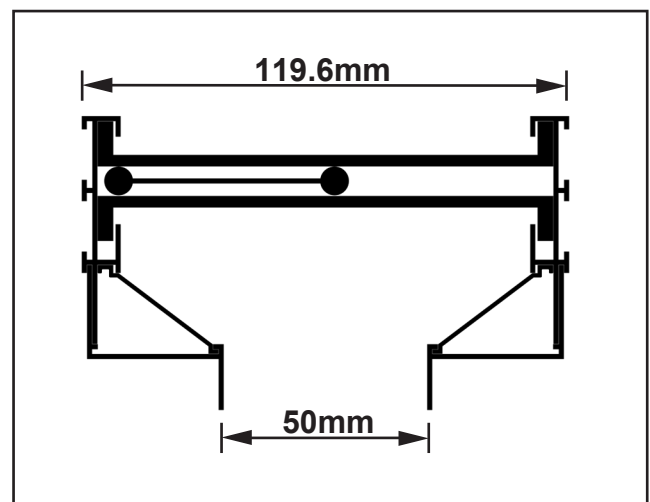
**Deflector:** Flat Aluminium profile with rounded edges.

**U-Channel:** Spring loaded Aluminium channels to hold deflector.



## DESCRIPTION:

- Air Master Flow Bar diffuser is specially designed to suit the contemporary architectural demands of modern-day interior designers. The seamless blending of slot diffusers in to the ceiling along with enhanced performance makes it a fine choice.
  - AFBD-3-C model flow bar diffuser is designed to be flushed with ceiling tile and serve ceiling mounted applications. No flange is visible and the view of a black opening into the ceiling gives a high-class finish to the interior.
  - Multi slot options are not available for AFBD-3-C model.
  - Flow Bar can handle more air volume per length for the same opening as compared to regular slot diffuser.
  - The deflector is sandwiched between U-Channels to control the direction of air flow. The U channels are spring loaded for smooth operation of deflector.
  - Air Master Flow Bar is equipped with special side deflector to channel the airflow smoothly towards the opening without any resistance to air flow thereby reducing the pressure drop and subsequently the noise level.
  - White frame with black interior makes the finish more attractive.
- AFBD-3-C model flow bar diffusers are available with a minimum radius of curvature of 3 meter.





**air master**  
ISO 9001 CERTIFIED COMPANY

**AIR MASTER EQUIPMENTS EMIRATES LLC.**

Post Box - 3180, Ajman, U.A.E.

Tel: +971 6 7436900, 7439600 Fax: +971 6 7436700

E-mail: [info@airmaster.ae](mailto:info@airmaster.ae), [sales@airmaster.ae](mailto:sales@airmaster.ae)